

# **SMTP TEST TOOL™**

**Version 2.1**

## **User Guide**

**05/2003**



<b>OVERVIEW .....</b>	<b>3</b>
<b>SOFTWARE INSTALLATION .....</b>	<b>3</b>
<b>SOFTWARE CONFIGURATION .....</b>	<b>4</b>
<b>SOFTWARE LICENSING .....</b>	<b>6</b>
<b>APPENDIX A:</b>	
<b>SMTP RESULT &amp; ERROR MESSAGES .....</b>	<b>7</b>

**This document contains information that is PATENT PENDING**

©Copyright 2003 SimpleComTools, LLC  
All rights reserved

## OVERVIEW

SMTP Test Tool™ is a Windows based software solution that provides network administrators, system engineers, and developers the ability to monitor and/or troubleshoot SMTP transactions.

SMTP Test Tool™ is perfect for anyone who needs information on whether or not a workstation (Windows PC) can access an SMTP server and what is happening during the underlying SMTP transaction handshake.

SMTP Test Tool™ is applicable in wide number of areas, including network and/or mail server administration, application configuration, telecom service installation, network troubleshooting, security system testing and configuration, or other similar solutions.

SMTP Test Tool™ can provide immediate insight into such elements as:

- **SMTP Server presence**
- **SMTP Server port setup**
- **Authentication errors**
- **Encryption**
- **Message handling**
- **Transaction error identification**

SMTP Test Tool™ works on any Ethernet, Wireless LAN (802.11x), or TCP/IP network. SMTP Test Tool™ can be installed on any PC or Windows server on the LAN, and test transactions via email to any respondent located inside or outside the network. Message process and results are displayed in the transaction screen, and can be copied (via copy/ paste) for sharing and review by others.

## SOFTWARE INSTALLATION

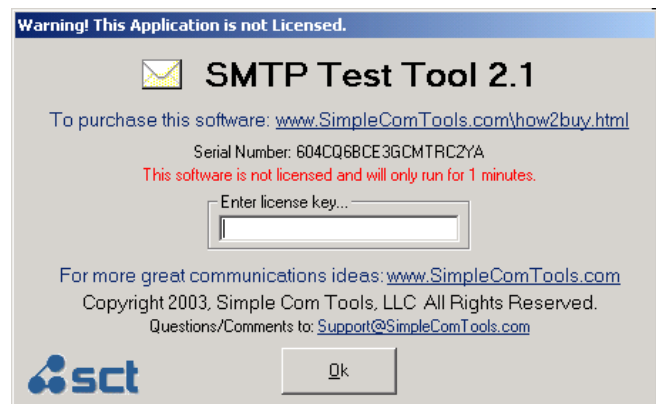
Install SMTP Test Tool™ by downloading and unzipping the install package.

- Launch Setup.exe
- Accept the License Agreement
- Select the Destination Folder where the software will be installed
- The installer will complete the installation and automatically open the destination folder

### Getting Started...

Begin setup by double-clicking the “SMTP Test Tool” icon. If you see this red highlighted alert screen, your version of software is unlicensed. An unlicensed version will only run for a period of 1 minute before terminating.

Select OK and the software will open to the main screen/desktop. This is the only screen or window you will be using.



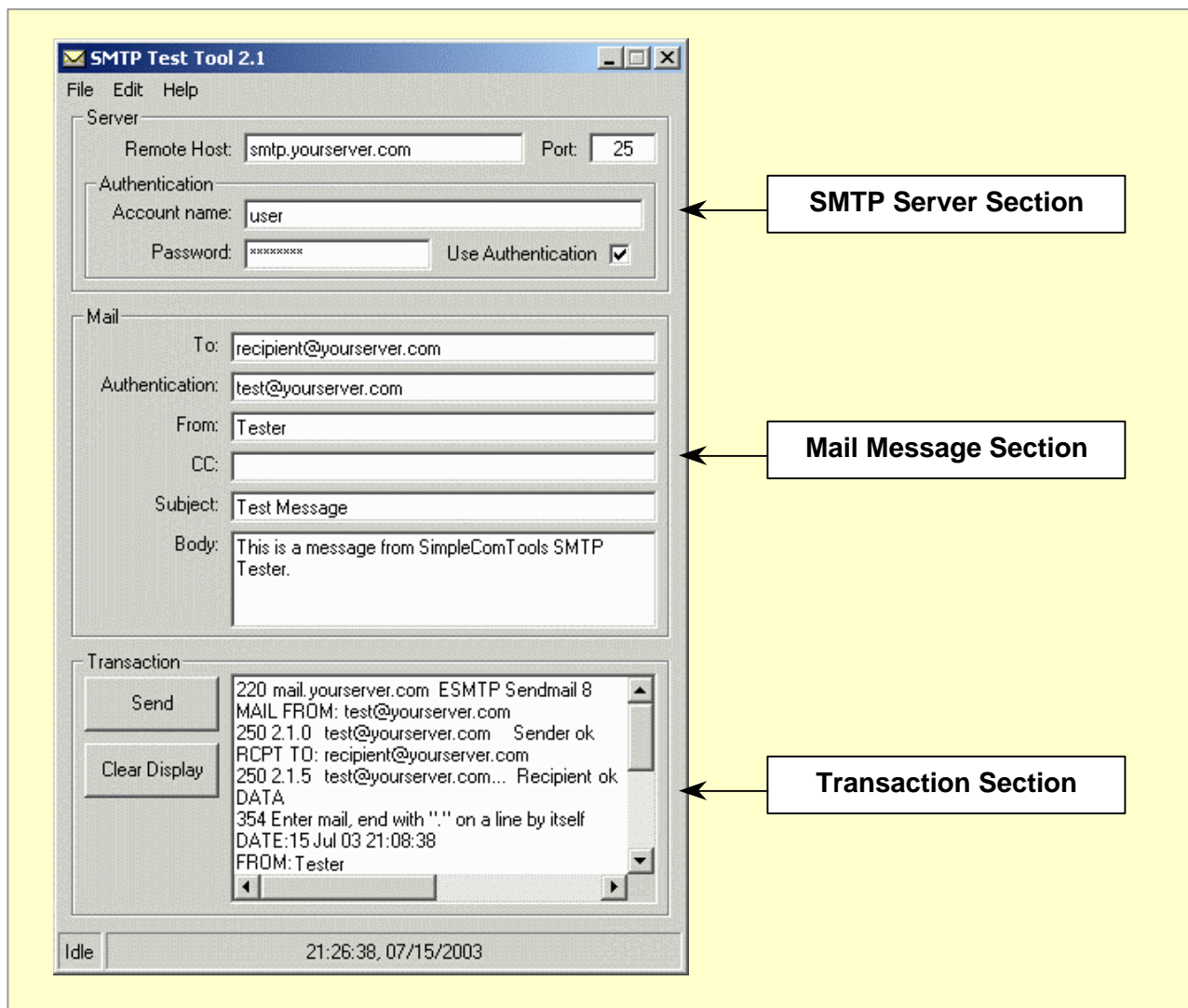
## SOFTWARE CONFIGURATION

SMTP Test Tool™ has a simple and intuitive user interface. The main screen/desktop puts all the configuration parameters at your fingertips, which means making changes quick and easy.

### Using the software...

The application software involves only one screen, which is broken down into (3) sections:

1. The SMTP SERVER section  
This section is for setting up the SMTP Server to be tested.  
This includes user definable TCP port and Authentication parameters.
2. The MAIL MESSAGE section  
This section is for setting up the sender, recipient and message text.
3. The TRANSACTION section  
This section is where the actual SMTP transaction is displayed in real-time.  
The flat text display also allows the ability to copy-and-paste the results into other apps.



## Configuring the software...

### SMTP Server Configuration

**Remote host:**

This is the IP Address or domain name of the SMTP Server being tested

**Port:**

The TCP Port where the SMTP service is running. (Default is 25).

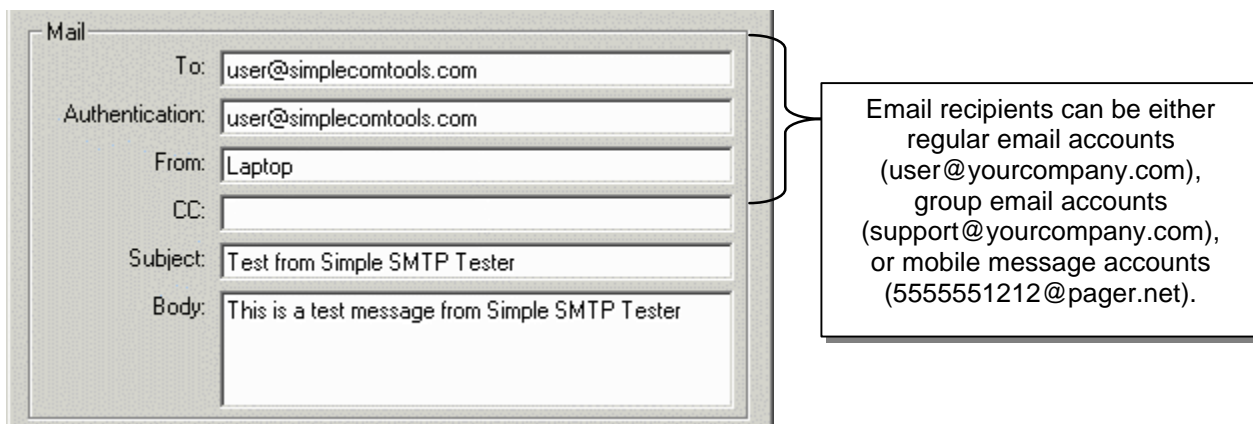
**Account Name/Password:**

This is a user Account name and Password on the mail server

**Use Authentication:**

Check this if the SMTP server requires user account authentication when sending mail.

### Mail Message Configuration

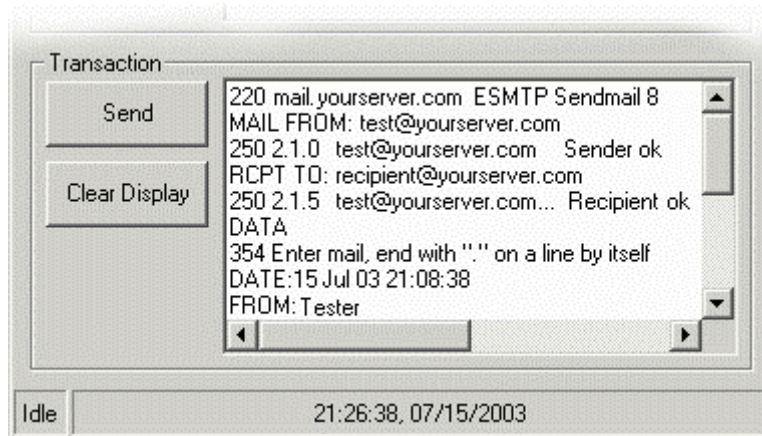


<b>To:</b>	Message recipient
<b>Authentication:</b>	Email address of Account name/user sending message
<b>From:</b>	Free text field – can be whatever you like
<b>CC:</b>	Carbon Copied recipient(s)
<b>Subject:</b>	Message subject
<b>Body:</b>	Message text

Select FILE/SAVE to save these SMTP server and message configurations.

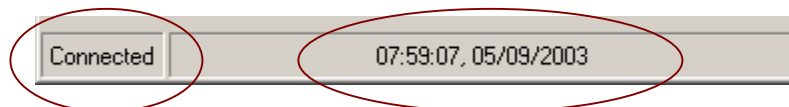
### **SMTP Message Transaction Display**

Ensuring SMTP Server connectivity and message transfer is easy. SMTP Test Tool™ includes a SMTP message Test and Transaction Display. Once you have configured the SMTP server, user account, password, recipients and message text – you are free to use the Test/Display to test message handshakes. You will see the complete SMTP session authentication and transfer. This can be very helpful when debugging mail problems.



### **Status Bar**

At the bottom on the main configuration/display screen, you will notice a transaction status bar. This is designed to display the current state of each transaction step, as well as Date and Time.



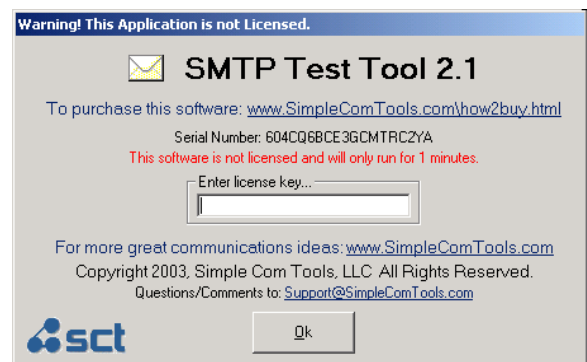
## **SOFTWARE LICENSING**

To obtain a license, send the Serial Number shown on this screen to your SimpleComTools reseller and request a permanent license key.

If purchasing direct from SimpleComTools, enter the Serial Number shown on this screen in the appropriate field when completing your online transaction.

Questions about either process can be sent to [Support@SimpleComTools.com](mailto:Support@SimpleComTools.com).

**Thanks for using the SMTP Test Tool™!**  
- SimpleComTools, LLC



## Appendix A

### SMTP Result and Error Messages

211	A system status message.
214	A help message for a human reader follows.
220	Service ready.
221	Service closing.
250	Requested action taken and completed. The best message of them all.
251	The recipient is not local to the server, but it will accept and forward the message.
252	The recipient cannot be Verified, but the server accepts the message and attempts delivery.
354	Start message input and end with <CRLF>.<CRLF>. This indicates that the server is ready to accept the message itself.
421	The service is not available and the connection will be closed.
450	The requested command failed because the user's mailbox was unavailable (for example since it was locked).
451	The command has been aborted due to a server error. Not your fault.
452	The command has been aborted because the server has insufficient system storage.
500	The server could not recognize the command due to a syntax error.
501	A syntax error was encountered in command arguments.
502	This command is not implemented.
503	The server has encountered a bad sequence of commands.
504	A command parameter is not implemented.
550	The requested command failed because the user's mailbox was unavailable (for example because it was not found, or because the command was rejected for policy reasons).
551	The recipient is not local to the server. The server then gives a forward address to try.
552	The action was aborted due to exceeded storage allocation.
553	The command was aborted because the mailbox name is invalid.
554	The transaction failed.